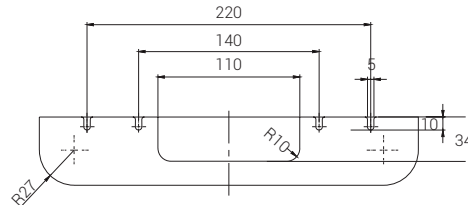
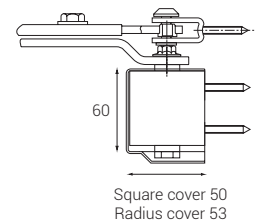
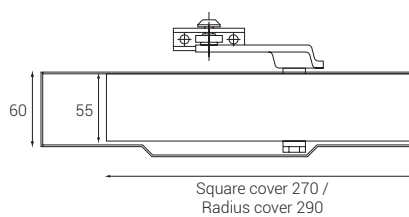


OVERHEAD DOOR CLOSERS 9000 SERIES



BS EN 1154



		9900	9930
Closing Force	EN Size	2-5	2-5
Door Size (Max)	Width (mm)	1250	1250
	Weight (kg)	100	100
Application	fig 1.	✓	✓
	fig 6.	✓	✓
	fig 66.	✓	✓
Mechanism	Cam & Roller	✓	✓
With Cover		✓	✓
Power Shoe Bracket		✓	✓
Angle of Opening		180	180
Non Handed		✓	✓
Power Adjustment	By Spring	✓	✓
Adjustable Sweep Speed		✓	✓
Adjustable Latching Speed		✓	✓
Adjustable Backcheck		X	✓
Adjustable Delayed Action		X	X
CE Marked		✓	✓
Certifire Approved		✓	✓
Guarantee		10 yrs	10 yrs
Hold Open Arm		✓	✓

OVERHEAD DOOR CLOSERS WITH COVER & MATCHING ADJUSTABLE ARM

The 9000 overhead door closer range offers a choice of two closers, each available with either a radius or square cover creating a stylish design on any door set. Each closer offers the unique high efficiency cam and roller action making them suitable for the Equality Act considerations.

The main difference between the two models is the adjustable backcheck, which is available on the 9930 model but not the 9900.

Alternative closers are available if you have requirements outside of the specifications below.

All closers are supplied as standard with a matching arm, and there is also the option of having a hold open arm. All closers offer universal fitting and are supplied with brackets for fig 1, fig 61 and fig 66 fixing.

Finishes are available in: Silver, PAA, SAA, PB, SS, PS and all other RAL colours.

The main difference between the two models is the Adjustable Backcheck, which is available on the 9930 model but not the 9900



Square Cover